



# Holy Family Hospital

An Institution of the Order of Malta

## EDITORIAL



### Contact us:

**HOLY FAMILY HOSPITAL**  
322-326 Paul VI Street  
P. O. Box 8 – Bethlehem  
Palestinian Authority

Tel: +970 2 274 1151  
Fax: +970 2 2741154

E-mail:

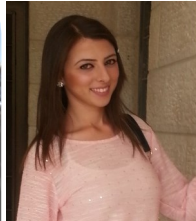
[info@holyfamilyhospital-bethlehem.org](mailto:info@holyfamilyhospital-bethlehem.org)

Website:

[www.holyfamilyhospital-bethlehem.org](http://www.holyfamilyhospital-bethlehem.org)

### Inside this issue :

Editorial	1
Activity Report	4
Detailed Statistic	5



Randa Sleibi  
Projects Coordinator

“Blessed is he that considereth the poor: the Lord will deliver him in time of trouble.”

Psalm 41:1

In line with our mission to serve the poorest of the poor by providing quality health services to the neediest people, and considering that in poor communities, families have difficulties accessing health care, Holy Family Hospital approaches an otherwise un-served population: women and children who live in scattered communities in the remote villages and the surrounding desert, offering them a range of obstetric, gynecological and pediatric services.

Holy Family Hospital first inaugurated the mobile outreach clinic in 1995, and throughout the years, the services it provides and the regions it visits have expanded. Today, a team of an OB/GYN, a pediatrician, a nurse, and a driver makes five weekly visits in the hospital’s mobile clinic van treating underprivileged patients at their doorsteps.

Around 5,000 consultations are performed each year, towards a community where health care is needed most, but yet inaccessible. Holy Family Hospital’s initiative doesn’t only give hope to poor deprived families, but also shows that we believe in their value and care for their wellbeing.

### TO MAKE A DONATION:

BANK ACCOUNT:

**HOLY FAMILY HOSPITAL**  
ACCOUNT № : 3890000/0  
WITH

**BANK OF PALESTINE PLC**  
SWIFT CODE: PALSPS 22

P.O.BOX 765 - BETHLEHEM WEST BANK VIA ISRAEL      BANK № 89 /BANK BRANCH № 450  
IBAN: PS52PALS045003890000333000000 (EUR)  
IBAN:PS47PALS045003890000013000000 (USD)  
IBAN:PS32PALS045003890000993000000 (NIS)

*Designed by*

*Mrs. Rawan Hazboun  
Bazazo*



## Happy Mothers Day To The new mothers





# *Happy Mother's Day* to all the mothers in the world - March 21st

The is the day when we Celebrate the motherhood and the maternal bonds relationship .The Management committee hand by hand with the employees of HFH in the occasion of the Mother's Day , they held the Mother's day celebration for all the working mother's at the Hospital. They honored ,greeted and wished them a blessed mother's Day.

We wish all mothers around the world and especially those who gave birth at Holy Family Hospital, a blessed and a Happy Mother's Day!

*In the name of the management team & staff of HFH,  
we wish every mother a joyful & Happy Mother's day*



May the risen Christ bring happiness to you and your family all  
year around.

Wishing you and all your beloved ones  
a very Happy Easter.



# ACTIVITY REPORT

*“Hope is a powerful motivation for Charity”*

## Monthly Deliveries

	1990	1995	2000	2005	2006	2007	2009	2010	2011	2012	2013	2014	2015	2016	2017	2018
JAN	0	148	250	224	240	230	221	258	249	274	249	271	313	278	306	357
FEB	4	130	239	221	218	228	239	221	228	227	224	257	264	271	296	309
MAR	46	168	231	231	217	313	236	265	260	278	260	287	286	277	318	333
APR	68	180	274	240	216	322	280	298	286	265	301	267	277	268	295	
MAY	85	188	288	238	237	366	284	304	285	229	250	240	297	304	365	
JUN	85	202	294	258	219	277	275	333	292	261	278	302	311	313	362	
JUL	84	188	329	235	243	276	328	307	286	306	279	314	379	379	427	
AUG	71	199	309	235	256	264	280	286	292	296	289	319	351	340	403	
SEP	109	167	275	234	280	233	261	295	263	291	267	281	327	329	386	
OCT	116	193	223	257	295	255	297	270	251	281	274	258	286	309	365	
NOV	97	203	165	213	257	224	247	237	224	249	271	251	224	278	371	
DEC	104	198	175	207	268	238	265	236	243	209	242	265	253	307	326	
<b>TOTAL</b>	<b>869</b>	<b>2164</b>	<b>3052</b>	<b>2793</b>	<b>2946</b>	<b>3226</b>	<b>3213</b>	<b>3310</b>	<b>3159</b>	<b>3166</b>	<b>3184</b>	<b>3312</b>	<b>3568</b>	<b>3653</b>	<b>4220</b>	<b>999</b>



**TOTAL DELIVERIES SINCE 1990**

**77,601**



Prepared by Mrs. Ahlam Fawadleh

# DETAILED STATISTICS



2018	JAN	FEB	MAR	APR	MAY	JUN	JUL	AUG	SEP	OCT	NOV	DEC	Total
ob/gyn consult. HFH	1018	766	789										2573
Outreach ob/gyn consultations	223	217	236										676
Outreach Ped. Consultations	94	131	124										349
Ped. Consultations	193	196	211										600
Hearing Screening	0	0	0										0
Diabetic Consultation	45	53	53										151
Diabetic Consultation Nutrition	0	13	14										27
Mammography	0	0	0										0
over 45 Well Women Health Clinic	47	91	95										233
private cons. o/g	736	718	760										2214
private cons. ped	72	55	56										183
Cardiology	49	49	0										98
Private cons. Rheumatology / Osteopor-	73	0	0										73
<b>T.Consultations</b>	<b>2550</b>	<b>2289</b>	<b>2338</b>										<b>7177</b>
TTL.Op.Del.File	6	2	2										10
Deliveries 3rd cl	314	266	289										869
Deliveries 2nd cl	11	13	13										37
Deliveries 1st cl	11	14	9										34
Del..2nd cl.private	6	4	12										22
Del..1st cl.private	15	12	10										37
<b>TTL Deliveries</b>	<b>357</b>	<b>309</b>	<b>333</b>										<b>999</b>
incl. C/S sections	73	80	75										228
incl. Del..UNRWA	133	121	115										369
dont acc. P.N.A.	1	2	0										3
gyn.oper. 3rd class	44	41	56										141
gyn.oper. 2nd class	-	-	1										-
gyn.oper. 1st class	-	-	-										-
gyn.oper. .2nd class private	9	6	6										21
gyn.oper. 1st class private	-	1	-										-
<b>TTL Gyn.Oper.</b>	<b>53</b>	<b>48</b>	<b>63</b>										<b>164</b>
incl.op.UNRWA	18	25	18										61
incl.minor g.oper.	42	36	52										130
incl.major g.oper.	11	12	11										34
days ob/gn 3rd cl	659	593	647										1899
days ob/gn 2nd cl	39	36	52										127
days ob/gn 1st cl	49	53	32										134
<b>TOTAL days ob/gn</b>	<b>747</b>	<b>682</b>	<b>731</b>										<b>2160</b>
Admissions Obst.	418	370	391										1179
Admissions Gyn.	53	48	63										164
<b>TTL Admiss. Ob/gn</b>	<b>471</b>	<b>418</b>	<b>454</b>										<b>1343</b>
incl. Ad. UNRWA	182	186	167										535
days neo level 1	122	146	72										340
days neo level 2	76	54	66										196
days neo level 3	131	136	267										534
<b>TTL days Neonatal</b>	<b>329</b>	<b>336</b>	<b>405</b>										<b>1070</b>
Adm.Neo.level 1	12	12	11										35
Adm.Neo.level 2	11	6	4										21
Adm.Neo.level 3	7	8	16										31
<b>TTL Admiss. Neon.</b>	<b>30</b>	<b>26</b>	<b>31</b>										<b>87</b>
incl. Ad.UNRWA	15	7	11										33
dont Ad.P.N.A.	4	5	4										13
<b>T.OCCUP.%O/G</b>	<b>57.37</b>	<b>57.99</b>	<b>56.14</b>										<b>57.14</b>
<b>T.OCCUP.%Neo.L1+L2+L3</b>	<b>58.96</b>	<b>66.67</b>	<b>72.58</b>										<b>66.05</b>

